



ISO 9001:2015

 **Shree Ganesh** *Engineering Works*

एन. एस. आई. सी
NSIC
CERTIFIED CO.



TEXTILE Divison



📍 64, Jinwala Compound, Gabbarmata Mandir Street, Nr.Ajanta Cinema,
Kadodara-Surat Road, Kadodara - 394 327 (Guj.) India.
☎ +91 98243 39814, +91 98251 73945, +91 97232 80603, +91 90333 79990
✉ panday_ap@yahoo.com, info.shreeganeshengg@gmail.com

OUR PRODUCTS

- 1 Economical Jet Dyeing with Reel
- 2 User friendly Economical Jet
- 3 Economical Multi-Nozzle Soft Flow
- 4 Economical Ht. Hp. / Atmospheric
- 5 Ht. Hp. Soft/ Over Flow
- 6 Conventional Rapid Jet
- 7 Economical Rapid Jet
- 8 Economical Top Tube
- 9 Scouring Machine
- 10 Economical Beam
- 11 Hydro Extractors
- 12 Washing Rope Form
- 13 Stenter Machine

Economical Jet Dyeing with Reel

All New 5 Piece Design

These is same Economical Jet Dyeing Machine. Only difference in this machine is, provide fabric drive reel before the jet nozzle to move the fabric. Fabric drive reel & angular nozzle design is provide fast movement to the fabric to and help to reduce the loop time. it is very useful for the fabric like heavy polyester and its bands (Suiting and surting). These machine also available in the two different models, with Basket & with Teflon rods, same like Economical Jet Dyeing machine.

Exclusive Features :

- Lowest liquor ratio
- Reduce power consumption
- Reduce thermic energy
- Reduce maintenance.
- Lowest running cost.
- Zero Entanglement.

Technical Features :

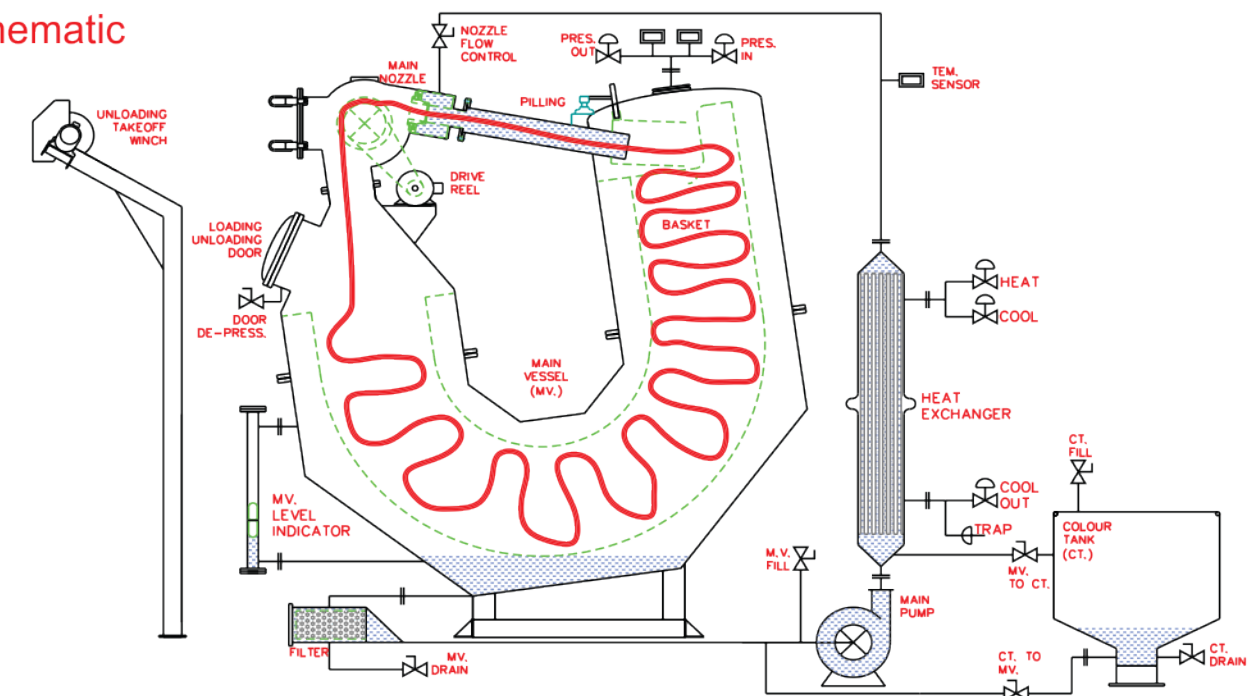
- Capacity : 25 to 500Kg.(Single Tube)
- Ultra Low Liquor Ratio - 1:2 (Wet Fabric)
- Dye - 30 To 450 Grms./Mtr. Sq. Fabrics (Woven & Knitted Fabrics)
- High Temp. - Up to 140°C.
- Max. Fabric Speed - 600 Mtr./Min.
- Fabric Driven Reel
- Vessel: SS 316 L

Optional Features :

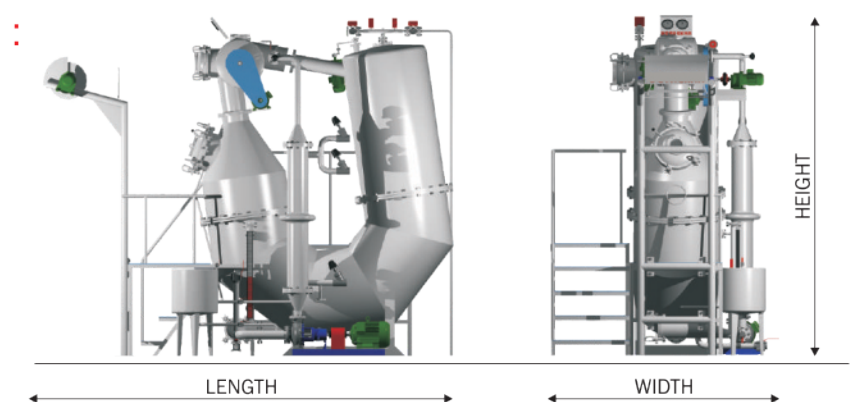
- Fully automatic with PLC.
- Main pump Invertor.
- Sealless Pump.
- Flow meter (Water liter counter)
- Seam detector.
- Magnetic level indicator / controller.
- Double tube for higher capacity.



Schematic



Dimension Diagram :



Note: Specifications & Dimension are subject to change without any prior notice.

CAPACITY (KG.) BASKET M/C.	CAPACITY (KG.) TEFLON M/C.	VESSEL DIA (INCH)	LENGTH (mm)	HEIGHT (mm)	WIDTH (mm)
25	50	20"	3000	2800	1650
50	75	26"	3450	2700	1900
75	100	26"	3450	2900	1900
100	125	30"	3850	3200	2025
150	200	34"	4200	3300	2100
200	250	34"	4200	3500	2100
250	300	34"	4200	3850	2100
300	400	37"	4500	3600	2200
400	500	37"	4500	4250	2200
500	600	40"	4700	4150	2400

User friendly Economical Jet Dyeing Machine

All New 5 Piece Design

In this development, there is no fabric drive reel to move the fabric. The fabric movement by only force of water. It is economical, because of low liquor ratio it's reduce every think. It is user's friendly because comparison with long tube dyeing machine, to control the fabric movement 4 valves required. Here in this Jet Dyeing Machines and Fabric Dyeing Machine there is only one valve. Absent of reel, reduce connecting electric power, maintenance of two mechanical seal and breakdown time, if Jet pressure and reel speed Nearly 9000 without fabric drive reel machines are saving energy and

Exclusive Features :

- Lowest liquor ratio
- Reduce power consumption
- Reduce thermic energy
- No Fabric Drive reel
- Reduce maintenance
- Lowest running cost
- Zero Entanglement

Technical Features :

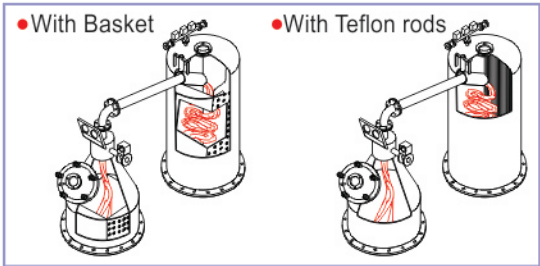
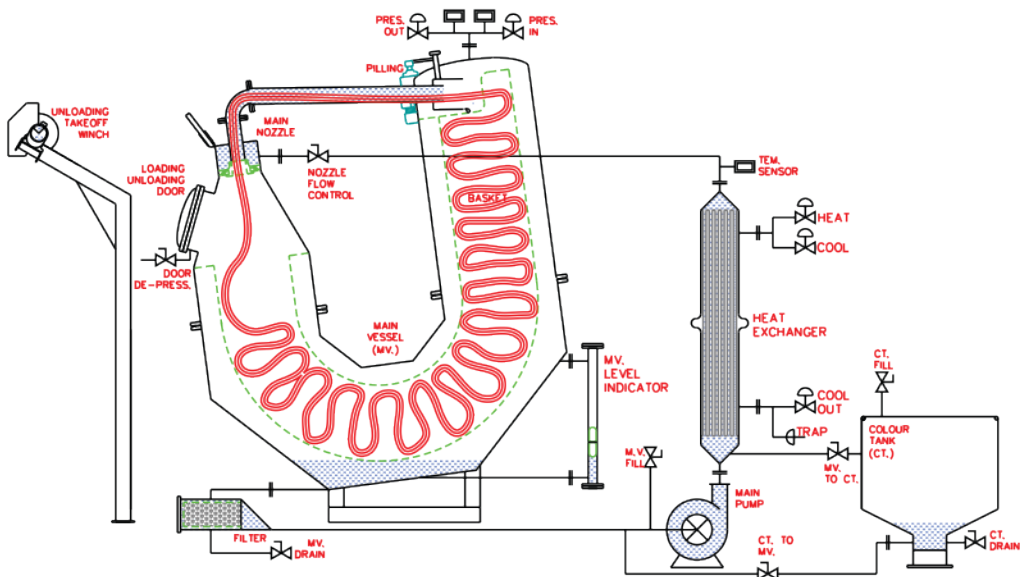
- Capacity : 25 to 500Kg.(Single Tube)
- Ultra Low Liquor Ratio - 1:1 (Wet Fabric)
- Dye - 30 To 450 Grms./Mtr. Sq. Fabrics (Woven & Knitted Fabrics)
- High Temp. - Up to 140°C.
- Fabric Speed - 300 Mtr./Min.
- Vessel: SS 316 L

Optional Features :

- Fully automatic with PLC.
- Main pump Invertor.
- Sealless Pump.
- Flow meter (Water liter counter)
- Seam detector.
- Magnetic level indicator / controller.
- Double tube for higher capacity.



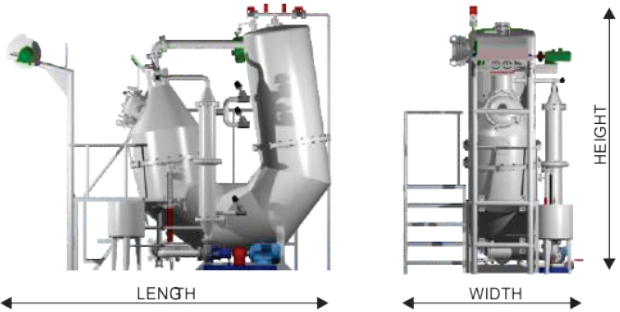
Schematic



Model

This basket is using for store the fabrics. Other development for increase the capacity instead of basket putting Teflon rods, which increase the capacity of machine in same total machine volume, that reduces the running cost with comparison of with basket type machine.

Dimension Diagram



Note: Specifications & Dimension are subject to change without any prior notice.

CAPACITY (KG.) BASKET M/C.	CAPACITY (KG.) TEFLON M/C.	VESSEL DIA (INCH)	LENGTH (mm)	HEIGHT (mm)	WIDTH (mm)
25	50	20"	3000	2800	1650
50	75	26"	3450	2700	1900
75	100	26"	3450	2900	1900
100	125	30"	3850	3200	2025
150	200	34"	4200	3300	2100
200	250	34"	4200	3500	2100
250	300	34"	4200	3850	2100
300	400	37"	4500	3600	2200
400	500	37"	4500	4200	2200
500	600	40"	4700	4100	2400

Economical Multi-Nozzle Soft Flow Jet Dyeing Machine

New textile and fabric dyeing plant has penetrated internationally dye-house machinery market with its new multi-nozzle soft flow dyeing machines that offers high productivity with low liquor ratio in fabric dyeing compared to the conventional dyeing machinery.

Multi-nozzle soft flow dyeing machinery is the new age solution. The Multi-Nozzle Low/High Temperature Dyeing technology works as soft flow as well as jet dyeing machine. The main advantage of this development is to increase the machine flexibility / versatility, to process all types of fabrics.

In this new technical development, the soft nozzles have big diameter and fix nozzle has an individual flow control valve. The main nozzle is adjustable. By increasing and decreasing the gap of nozzle, flow and pressure increases and decreases as per fabric quality demand. To run this machine as a soft flow machine, increase the gap that decreases the pressure and increases water flow. At that time all three nozzles work as soft flow and water flow gets control individually by control valve as per fabric quality demand.

To run machine as a jet dyeing machine, decrease the gap of nozzle, that increases the pressure and decreases the water flow. That time close the soft-nozzle control valve.

Exclusive Features :

- Lowest liquor ratio
- Reduce power consumption
- Reduce thermic energy
- Reduce maintenance
- Suitable for nearly all types of fabric quality
- Lowest running cost
- Zero Entanglement
- No Pilling Effect

Optional Features :

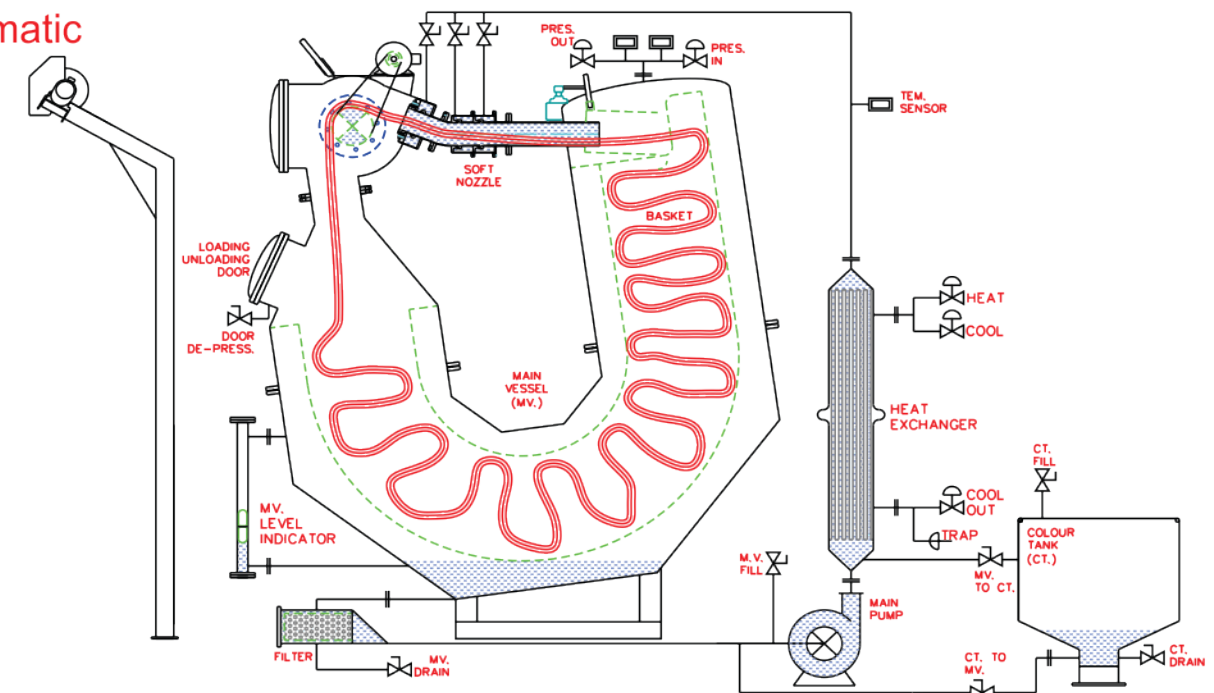
- Fully automatic with PLC.
- Main pump Invertor.
- Sealless Pump.
- Flow meter (Water liter counter)
- Seam detector.
- Magnetic level indicator / controller.

Technical Features :

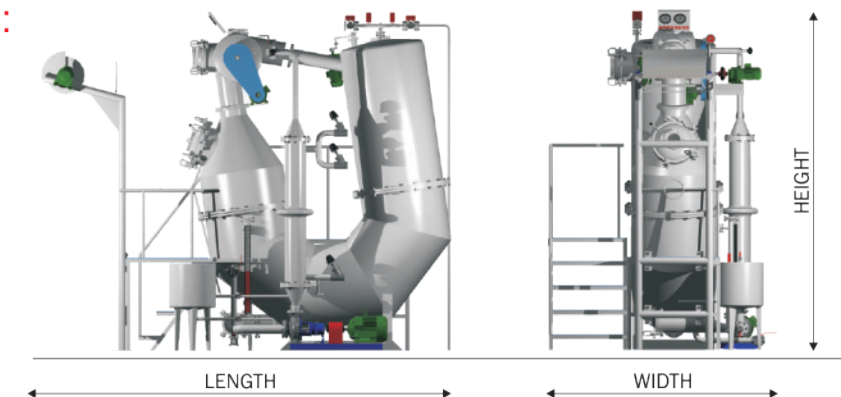
- Capacity : 25 to 400Kg. (Single Tube)
- Ultra Low Liquor Ratio - 1:1 (Wet Fabric)
- Dye - 30 To 500 Grms./Mtr. Sq. - Fabrics (Woven & Knitted Fabrics)
- High Temp. - Up to 140°C.
- Max. Fabric Speed - 400 Mtr./Min.
- Work as a Jet Dyeing as well as Soft Flow to meet the requirements of all types of fabric quality
- Vessel: SS 316 L
- Number of Very Soft Nozzles.



Schematic



Dimension Diagram :

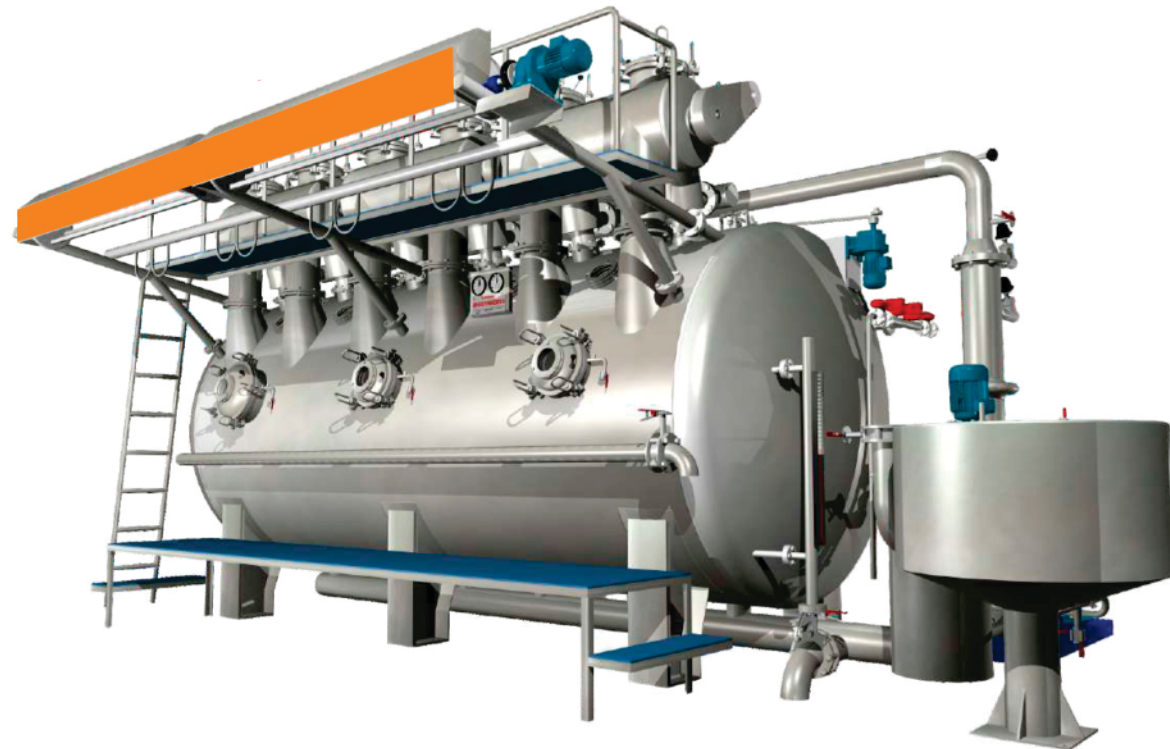


Note: Specifications & Dimension are subject to change without any prior notice.

CAPACITY (KG.)	VESSEL DIA (INCH)	LENGTH (mm)	HEIGHT (mm)	WIDTH (mm)
25	20"	3000	3000	1650
50	26"	3450	2900	1900
75	26"	3450	3100	1900
100	30"	3850	3500	2025
150	34"	4200	3600	2100
200	34"	4200	3800	2100
250	34"	4200	4150	2100
300	37"	4500	3900	2200
400	37"	4500	4500	2200

Economical Ht. Hp. / Atmospheric

Soft Flow Dyeing Machine



Ht. Hp. Soft Flow dyeing machine is suitable for the sensitive surface structure natural fabrics, such as cotton wool, viscose, acrylic and their blends of jersey, terry towel, velour and nylon.

It has been built with modern technology of high liquor flow using curved nozzle, which is transfer the fabric very smoothly and minimized the tension and avoid crease and peeling.

Exclusive Features :

- Lowest liquor ratio up to 1:4 (wet Fabric)
- Reduce power consumption
- Reduce thermic energy
- Reduce maintenance.
- Lowest running cost.
- Tangle free operation.
- No Rope mark, pilling effect & Hairiness.
- Online Washing System to save the time.

Optional Features :

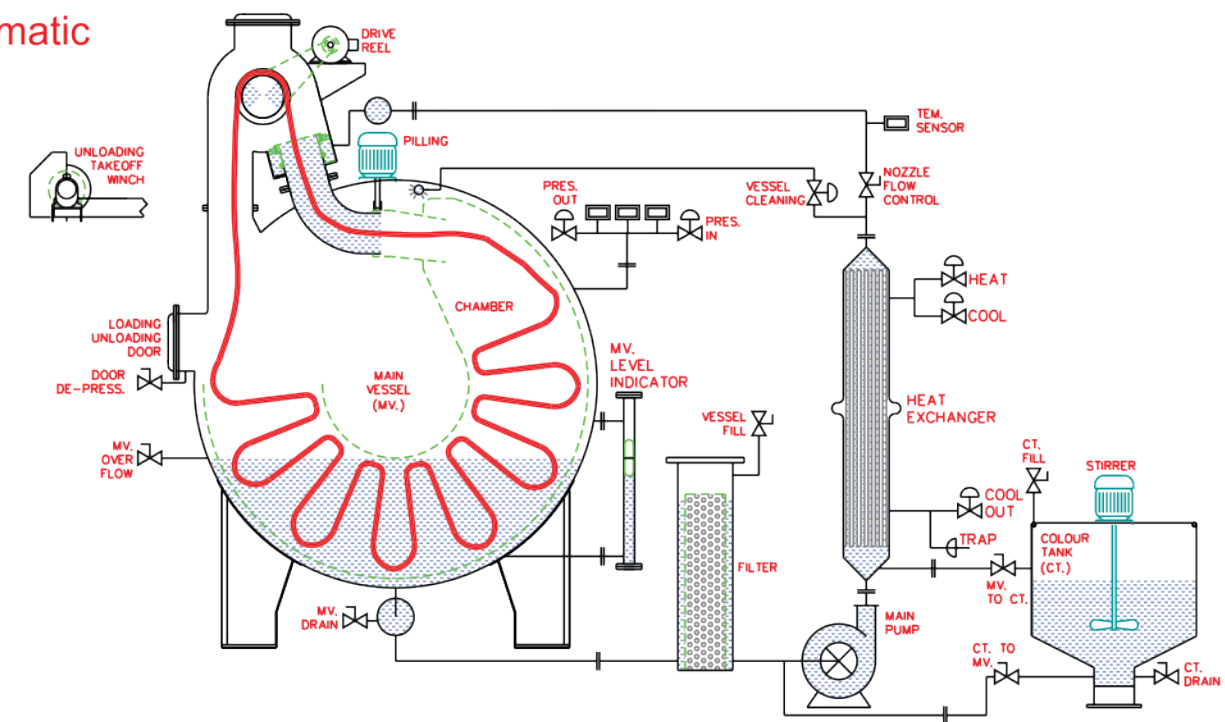
- Fully automatic with PLC
- Main pump Invertor
- Pre-Heating Tank with Accessories

Technical Features :

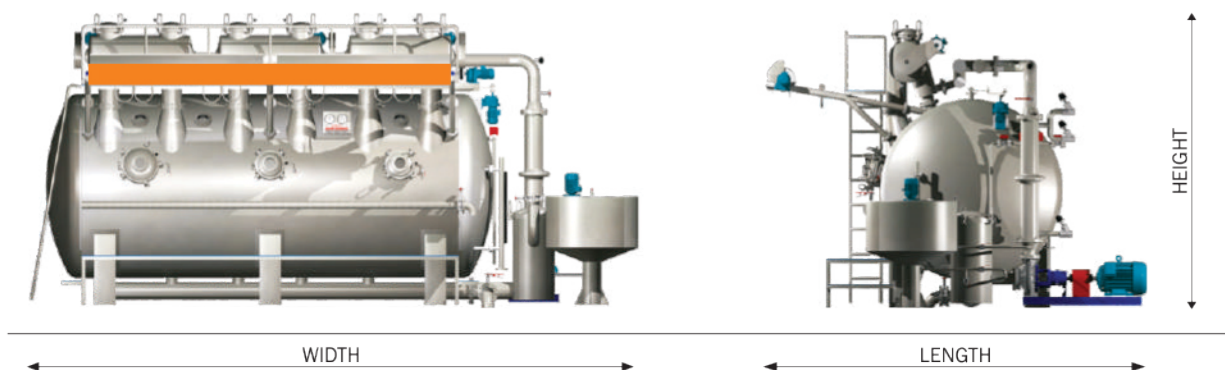
- Capacity : 25 to 1200Kg.
- Dye - 120 To 950 Grms./Mtr. Sq. Fabrics (Woven & Knitted Fabrics)
- High Temp. - Up to 140° C.
- Vessel made from - SS 316 L
- Online filter for easy cleanup even during the process with extra filter mesh.
- Teflon Sheet inside the chamber for smooth fabric movement.
- Cup type very soft nozzle with low presser & higher volume design.
- Fabric drive reel with frequency controller.

- Flow meter (Water liter counter)
- Seam detector
- Magnetic level indicator / controller

Schematic



Dimension Diagram :



Note: Specifications & Dimension are subject to change without any prior notice.

150KG./ CHAMBER

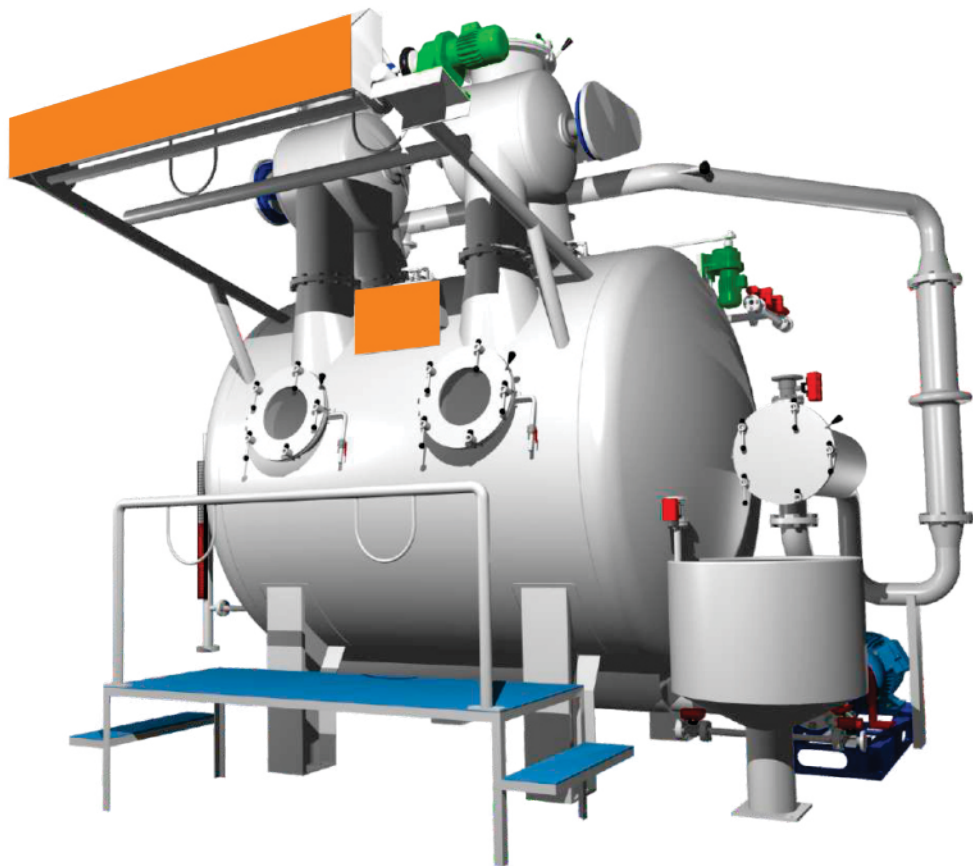
CAPACITY (Kg.)	CHAMBERS (Nos.)	VESSEL DIA (mm)	LENGTH (mm)	WIDTH (mm)	HEIGHT (mm)
150	1	2200	4400	2800	3800
300	2	2200	4400	3200	3800
450	3	2200	4400	3600	3800
600	4	2200	4400	4200	3800
900	6	2200	4500	5700	3800
1200	8	2400	4600	8000	4400

Ht. Hp. Soft/ Over Flow Dyeing Machine

This Machine is Specially Design to process Heavy and sensitive fabrics like Terry Towel, Curtain Bed sheet of 100% Cotton knit and woven fabrics. Machine able to work as a soft / Over flow with minor adjustment.

Larger nozzle diameter, Higher volume low presser nozzle design and inside Teflon sheet is help to move the fabric very smoothly and gently without damage the fabric.

Specially design online filter design helps to collect the Terry towel fumes.



Exclusive Features :

- Lowest liquor ratio
- Reduce power consumption
- Reduce thermic energy
- Reduce maintenance
- Lowest running cost
- Zero Entanglement

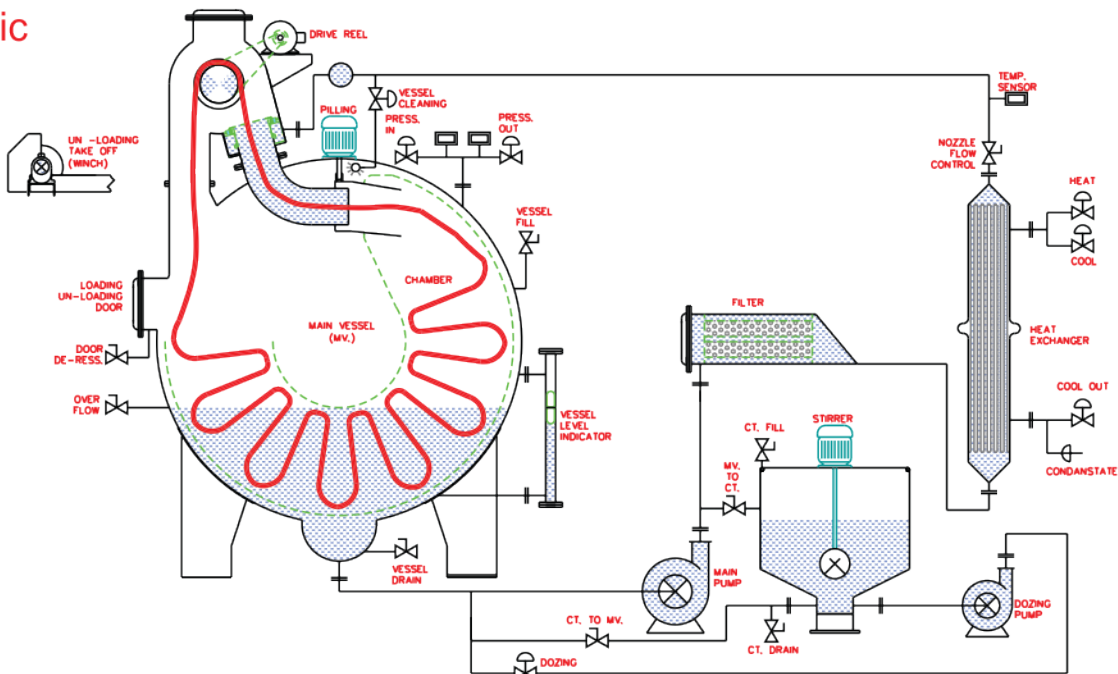
Optional Features :

- Fully automatic with PLC
- Main pump Invertor
- Pre-Heating Tank with Accessories
- Flow meter (Water liter counter)
- Seam detector
- Magnetic level indicator / controller

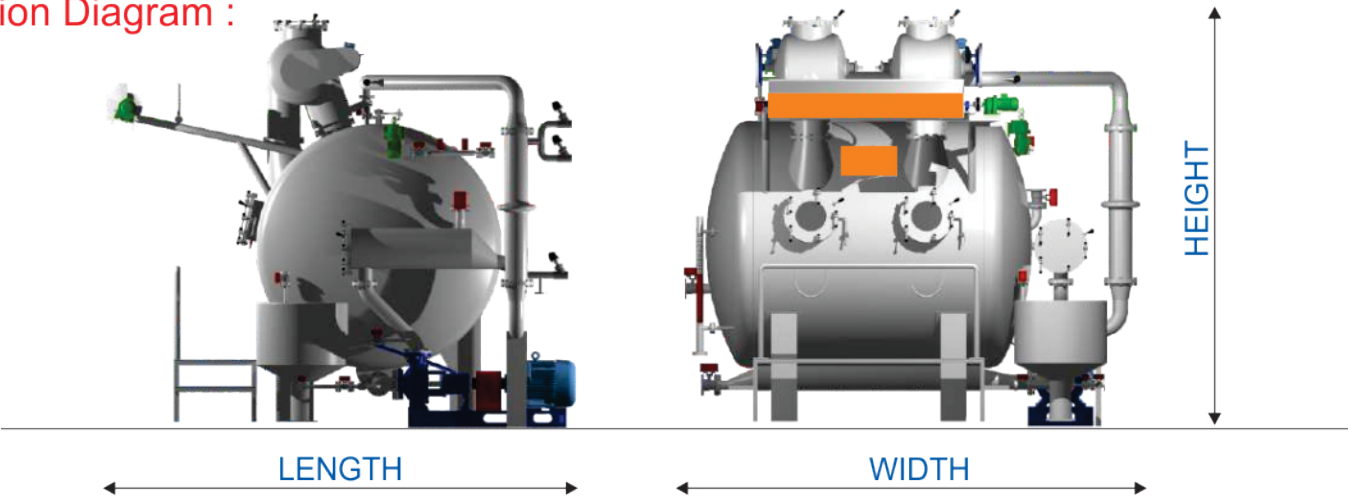
Technical Features :

- Capacity : 25 to 1500 Kg.
- Process have & sensitive fabric like Terry Towel, Curtain, Bed Sheet, 100% cotton knit & woven etc.
- Work as a soft flow as well as over flow dyeing.
- High Temp. - Up to 140°C.
- Vessel made from - SS 316 L
- Specially design filter to collect towel fumes.
- Teflon Sheet inside the chamber for smooth fabric movement.
- High volume, Low pressure soft nozzle with larger diameter for heavy and larger width fabrics.
- Fabric drive reel with frequency controller.

Schematic



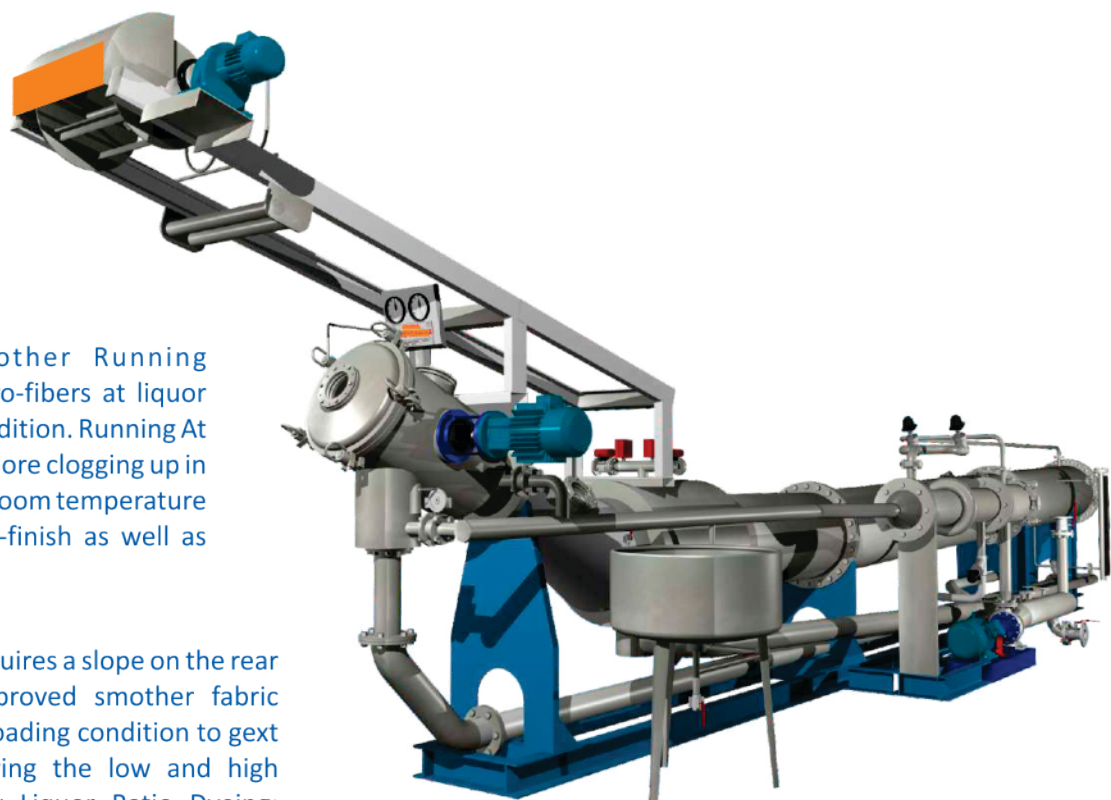
Dimension Diagram :



Note: Specifications & Dimension are subject to change without any prior notice.

CAPACITY (Kg.)	CHAMBERS (Nos.)	LENGTH (mm)	WIDTH (mm)	HEIGHT (mm)
250	1	4800	2800	4000
500	2	4800	4000	4000
750	3	4800	5250	4000
1000	4	4800	6500	4000
1250	5	4800	7750	4000
1500	6	4800	9000	4000

Conventional Rapid Jet Dyeing Machine



Vastly Improved Smoother Running Condition : Dyeing of micro-fibers at liquor ratio 1:6 in fully floating condition. Running At Stable, Lower tension: No more clogging up in the back of the chamber at room temperature to get better result of bio-finish as well as suitings and shirtings.

Our latest design, which requires a slope on the rear construction gives an improved smother fabric transportation and stable loading condition to gext tangle free operation during the low and high temperature process. Low Liquor Ratio Dyeing: More uniform circulation and better liquid separating contributes to stable and lower tension running while process.

Exclusive Features :

- Lowest liquor ratio compare to other Long Tube Machine
- Reduce power consumption
- Reduce thermic energy
- Reduce maintenance
- Lowest running cost

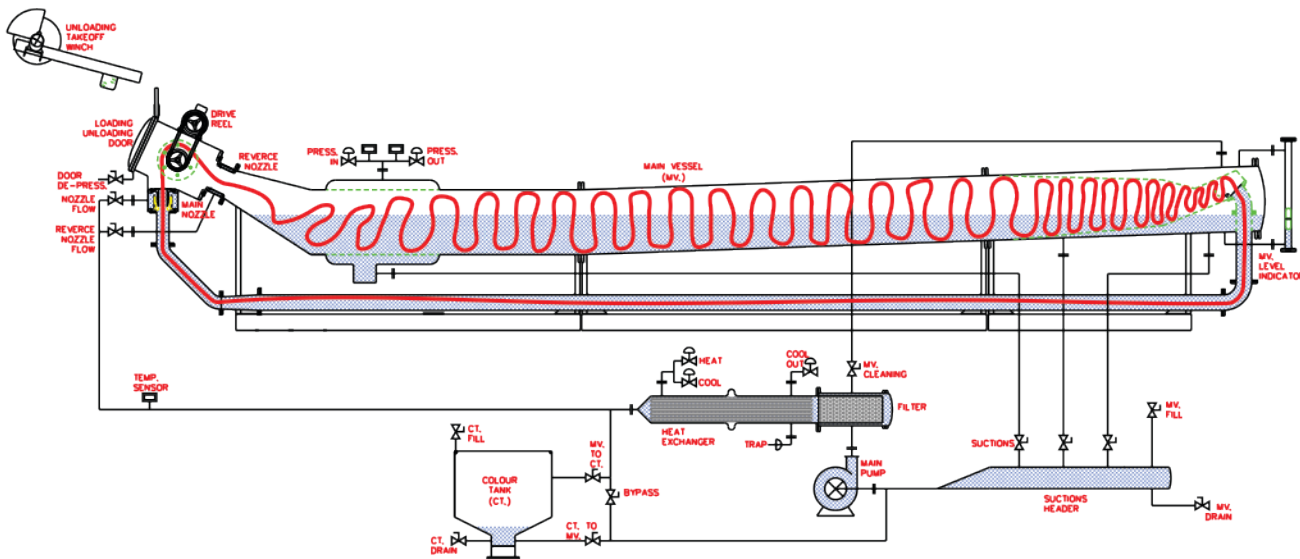
Technical Features :

- Capacity : 25 to 300 Kg. (Single Vessel)
- Dye - 30 to 450 Grms./Mtr. Sq. Fabrics (Woven & Knitted Fabrics)
- Liquor ratio: 1:4 to 1:6 (Wet fabric)
- High Temp. - Up to 140°C
- Vessel made from - SS 316 L
- Specially design bow jet nozzle for extra force.
- Fabric drive reel with frequency controller.

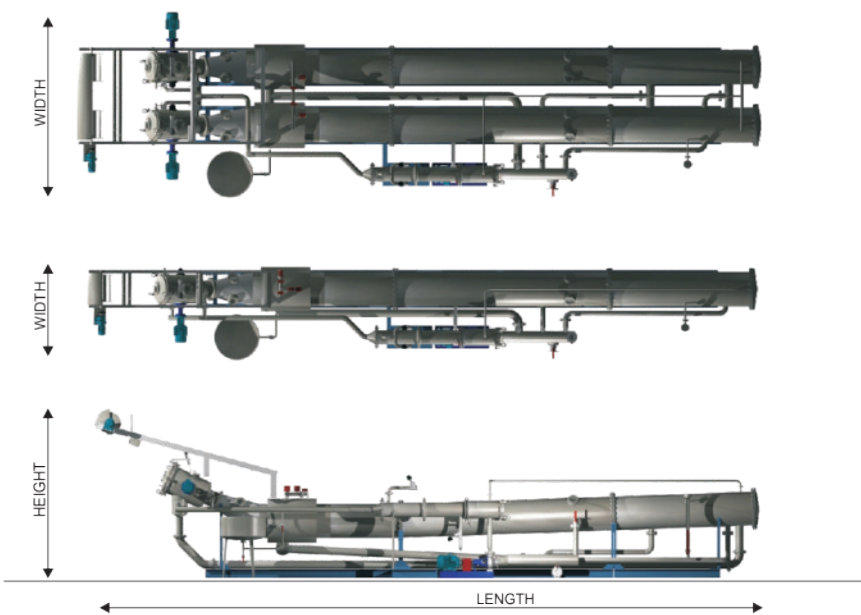
Optional Features :

- Fully automatic with PLC
- Main pump Invertor
- Pre-Heating Tank with Accessories
- Flow meter (Water liter counter)
- Seam detector
- Magnetic level indicator / controller
- Double tube for higher capacity

Schematic



Dimension Diagram :



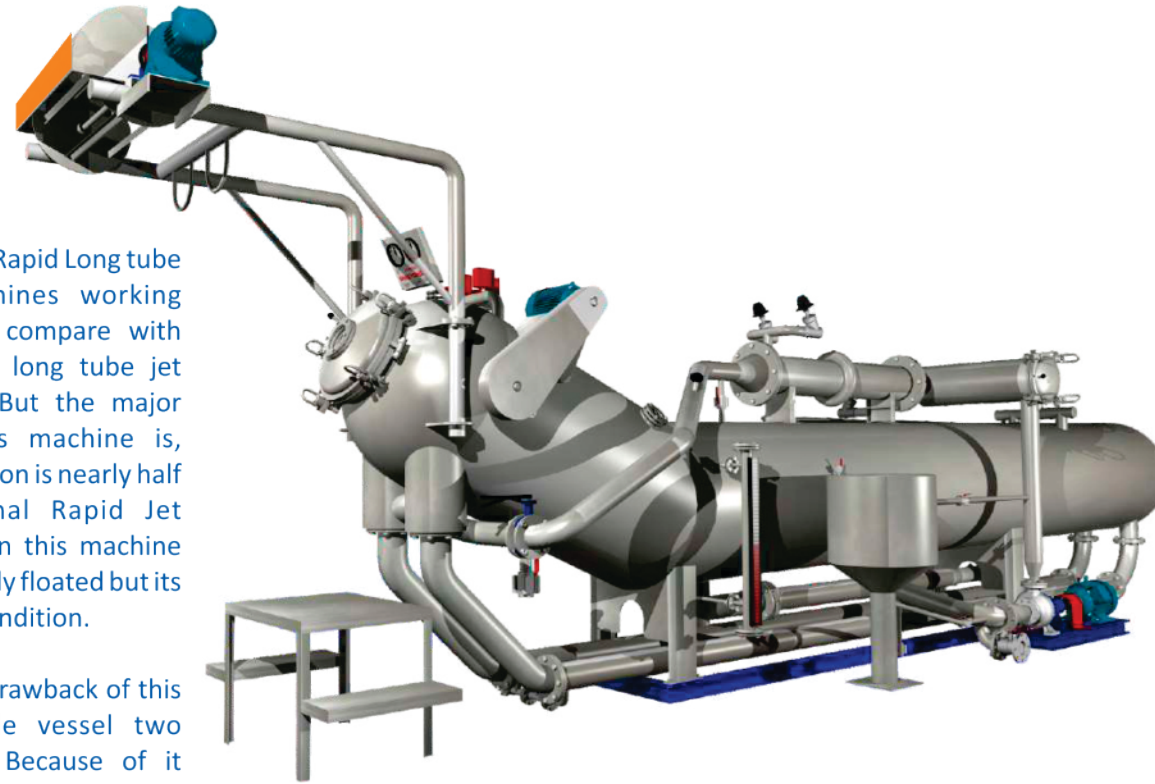
Note: Specifications & Dimension are subject to change without any prior notice.

CAPACITY (Kg.)	VESSEL DIA	LENGTH (mm)	WIDTH (mm)	HEIGHT (mm)
50	20"	6900	1800	2800
100	23"	9600	2000	3200
150	23"	10850	2000	3200
200	23"	12500	2000	3200
250	23"	13350	2000	3200
300	34"	12700	2200	3300

Economical Rapid Jet Dyeing Machine

Economical Rapid Long tube Jet dyeing machines working concept is same compare with Convention Rapid long tube jet dyeing machine. But the major drawback of this machine is, machine liquor ratio is nearly half than Conventional Rapid Jet dyeing machine. In this machine fabric not run in fully floated but its run nearly in dry condition.

Another drawback of this machine is single vessel two chamber design. Because of it fabric loop length is reduce and its also reduce the running cost, capital cost as well as process time.



Exclusive Features :

- Lowest liquor ratio compare to other Long Tube Machine
- Reduce power consumption
- Reduce thermic energy
- Reduce maintenance
- Lowest running cost

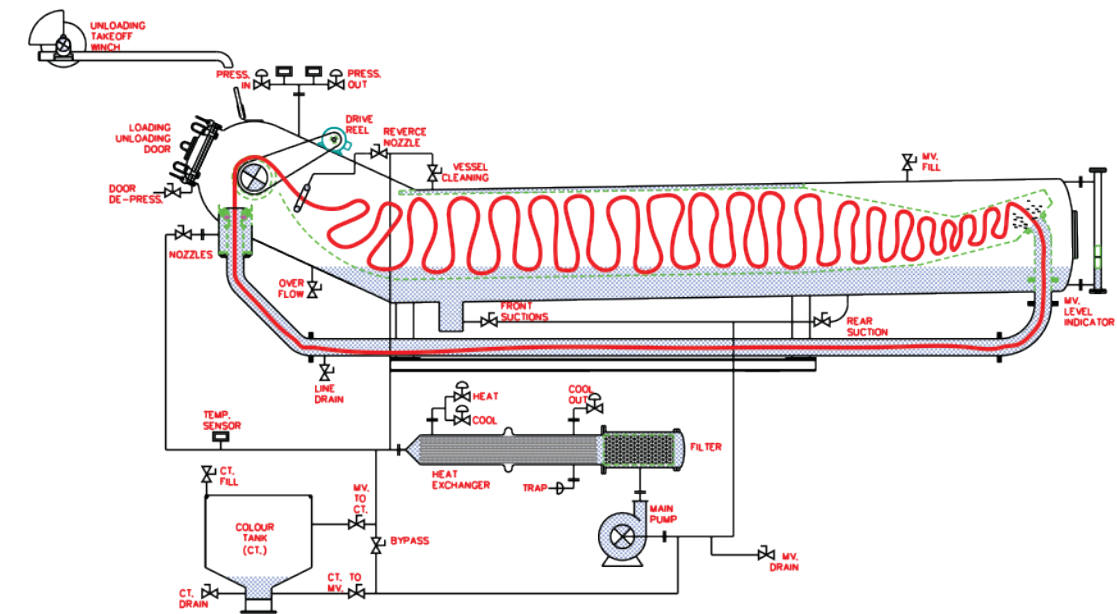
Technical Features :

- Capacity : up to 400 Kg.
- Dye - 30 to 450 Grms./Mtr. Sq. Fabrics (Woven & Knitted Fabrics)
- Low Liquor ratio: 1:4 to 1:6 (Wet fabric)
- High Temp. - Up to 140°C
- Vessel made from - SS 316 L
- Single Vessel two chamber to reduce the loop length as well as process time.
- Inside PTFE teflon sheet for antangle operation.

Optional Features :

- Fully automatic with PLC
- Main pump Invertor
- Flow meter (Water liter counter)
- Seam detector
- Magnetic level indicator / controller
- Online washing system.
- Specially design jet nozzle for extra force.
- Fabric drive reel with frequency controller.

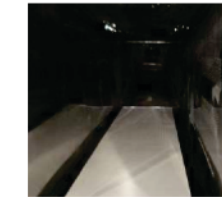
Schematic



Single vessel two chamber
(Reducing the loop length)

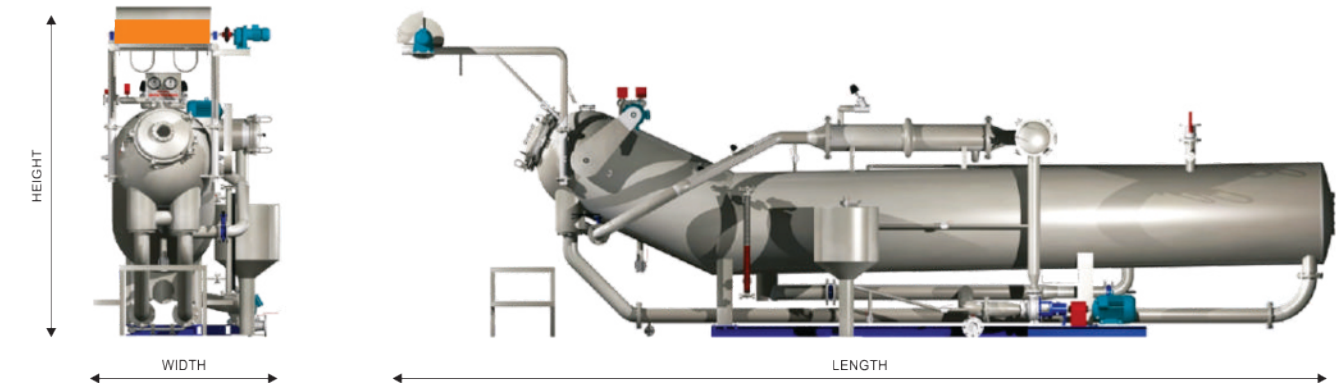


Invertor for fabric drive reel



PTFE Teflon sheet for
smooth fabric movement

Dimension Diagram :



Note: Specifications & Dimension are subject to change without any prior notice.

CAPACITY (Kg.)	CHAMBERS (Kg.)	VESSEL DIA (Inch)	LENGTH (mm)	WIDTH (mm)	HEIGHT (mm)
250	125	37"	9300	2005	3050
300	150	37"	10250	2025	3050
400	200	40"	13150	2050	3050

Economical Top Tube

Soft Flow Dyeing Machine



Economical Top Tube Soft flow dyeing machine very much suitable to process sanative woven & knitted fabrics. It's very soft nozzle decrease the tension and avoid the problems like crease marks, rope marks, shrinking etc.. Another drawback of

Exclusive Features :

- Lowest liquor ratio compare to other Long Tube Machine
- Reduce power consumption
- Reduce thermic energy
- Reduce maintenance
- Lowest running cost

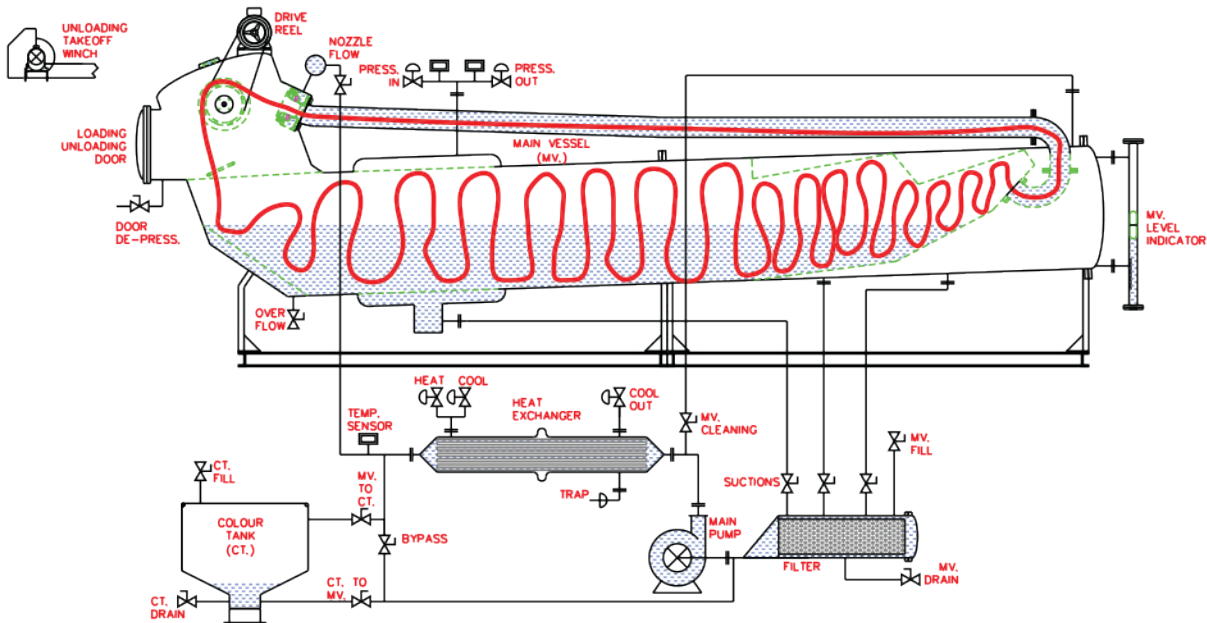
Technical Features :

- Capacity : up to 400 Kg.
- Dye - 30 to 450 Grms./Mtr. Sq. Fabrics (Woven & Knitted Fabrics)
- Low Liquor ratio: 1:8 (Wet fabric)
- High Temp. - Up to 140°C
- Vessel made from - SS 316 L
- Single Vessel two chamber to reduce the loop length

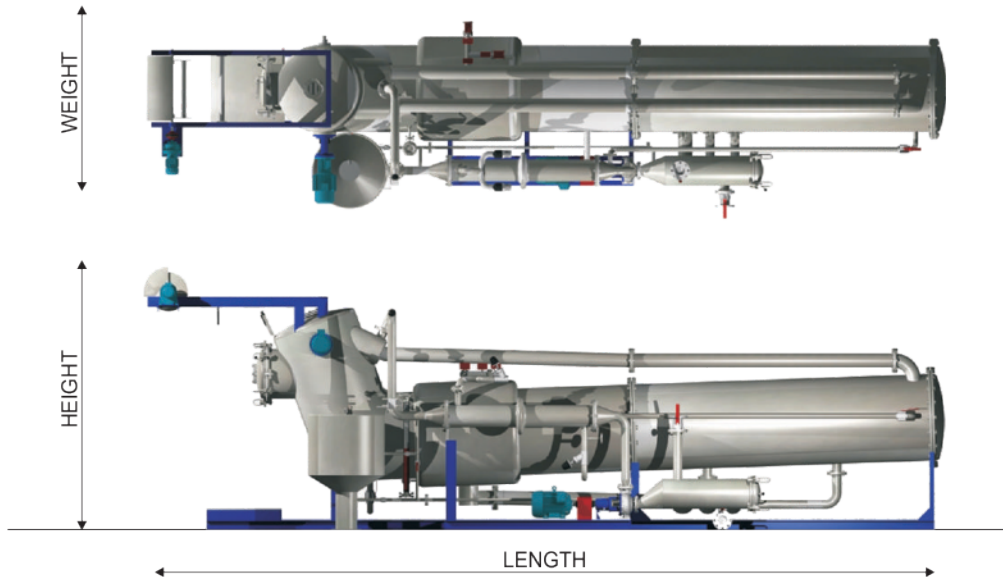
Optional Features :

- Fully automatic with PLC
- Main pump Invertor
- Flow meter (Water liter counter)
- Seam detector
- Magnetic level indicator / controller
- Double tube for higher capacity
- Specially design soft nozzle for smooth and entangle free operation.
- Fabric drive reel with frequency controller.

Schematic



Dimension Diagram :



Note: - Specifications & Dimension are subject to change without any prior notice.
Capacity as per fabric quality

CAP. KG./ BATCH	CAP. KG./ CHAM/	VESSEL DIA	LENGTH (mm)	WIDTH (mm)	HEIGHT (mm)
100 to 125	50 to 65	34"	6500	2000	2700
200 to 250	100 to 125	34"	8000	2000	2700
300 to 350	150 to 175	34"	10650	2000	2700
400	200	37"	11250	2000	3000

Scouring Machine

with Caustic Recovery System

This Machine is suitable for dyeing as well as weight reduction for synthetic fabric. Fabric are circulated with low tension by alkali liquid sprayed from soft nozzle which give good feet result and improves the evenness of the fabric.

The machine is capable for interactions of the fabric with sodium hydroxide (mercerization) for any type of fabric like Cotton, Tencel, Manmade fibers, Newcell etc.

(Suitable for Scouring / Weight reduction for synthetic fabric / Mercerising)



Exclusive Features :

- Lowest liquor ratio
- Reduce power consumption
- Reduce thermic energy
- Reduce maintenance
- Lowest running cost
- Zero Entanglement
- Fully Dismantle Design

Technical Features :

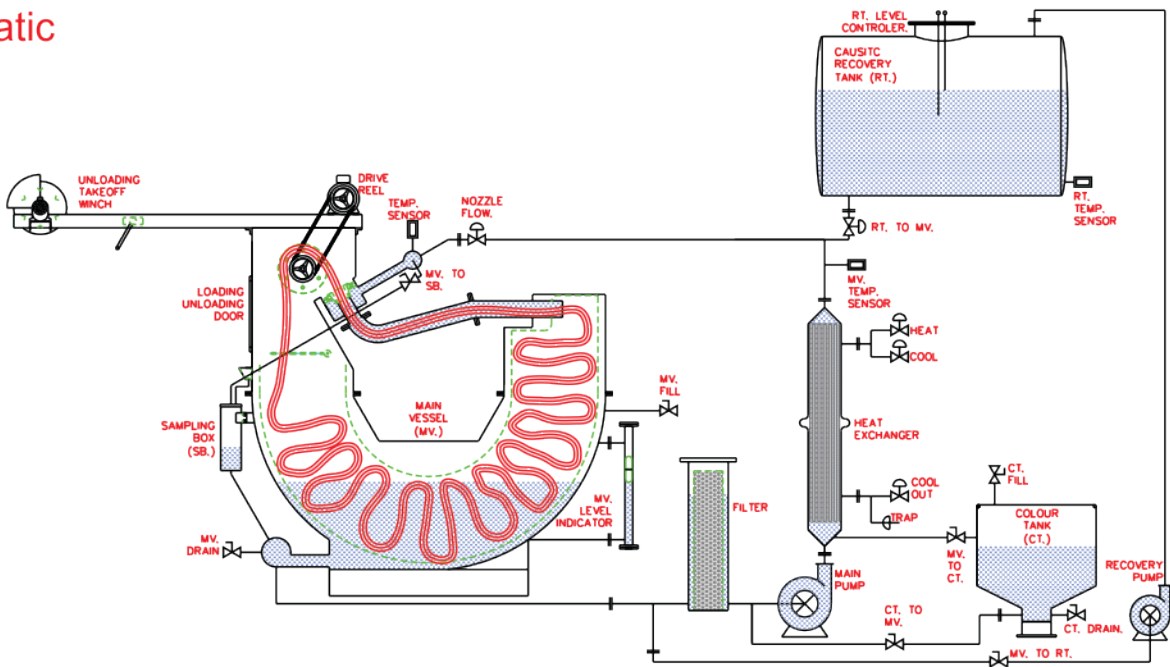
- Capacity : up to 1200 Kg.
- Max. Temp. - Up to 98°C
- Vessel made from - SS 316 L

Optional Features :

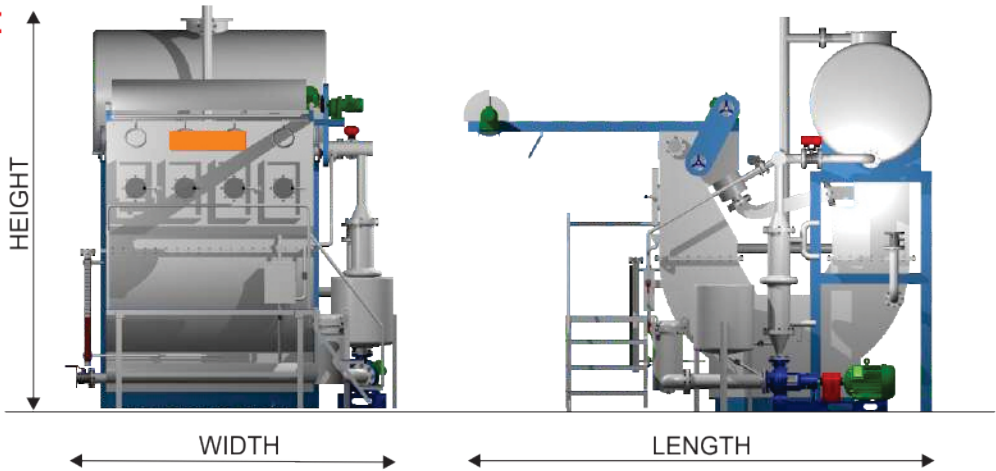
- Fully automatic with PLC
- Partly Automatic
- Main pump Invertor
- Flow meter (Water liter counter)
- Seam detector
- Magnetic level indicator / controller
- Double tube for higher capacity
- Pre-Heating system for recovery tank

- Caustic Recovery tank with Pump & other Accessories.
- Sampling Device
- Suitable to for dyeing as well as weight reduction for synthetic fabrics.

Schematic



Dimension Diagram :



Note: Specifications & Dimension are subject to change without any prior notice.

200Kg./Chamber

CAPACITY (Kg.)	CHAMBERS (Nos.)	CAUSTIC TANK (Liters)	LENGTH (mm)	WIDTH (mm)	HEIGHT (mm)
200	1	1100	4900	2100	4350
400	2	2200	4900	2600	4350
600	3	3300	4900	3100	4350
800	4	4400	4900	3600	4350
1000	5	5500	4900	4200	4350
1200	6	6600	4900	2100	4350

Economical Beam Dyeing Machine



Ht. Hp. Economical Beam dyeing machine is the proved technology world wide to bleaching and dyeing Woven & Knit fabrics in open width.

Our Economical dyeing machine is equipped with our energy saver patented which alimented the dyes and colour injection pump and reduce stem, water and electricity consumption.

Exclusive Features :

- Lowest liquor ratio
- Reduce power consumption
- Reduce thermic energy
- Reduce maintenance
- Lowest running cost

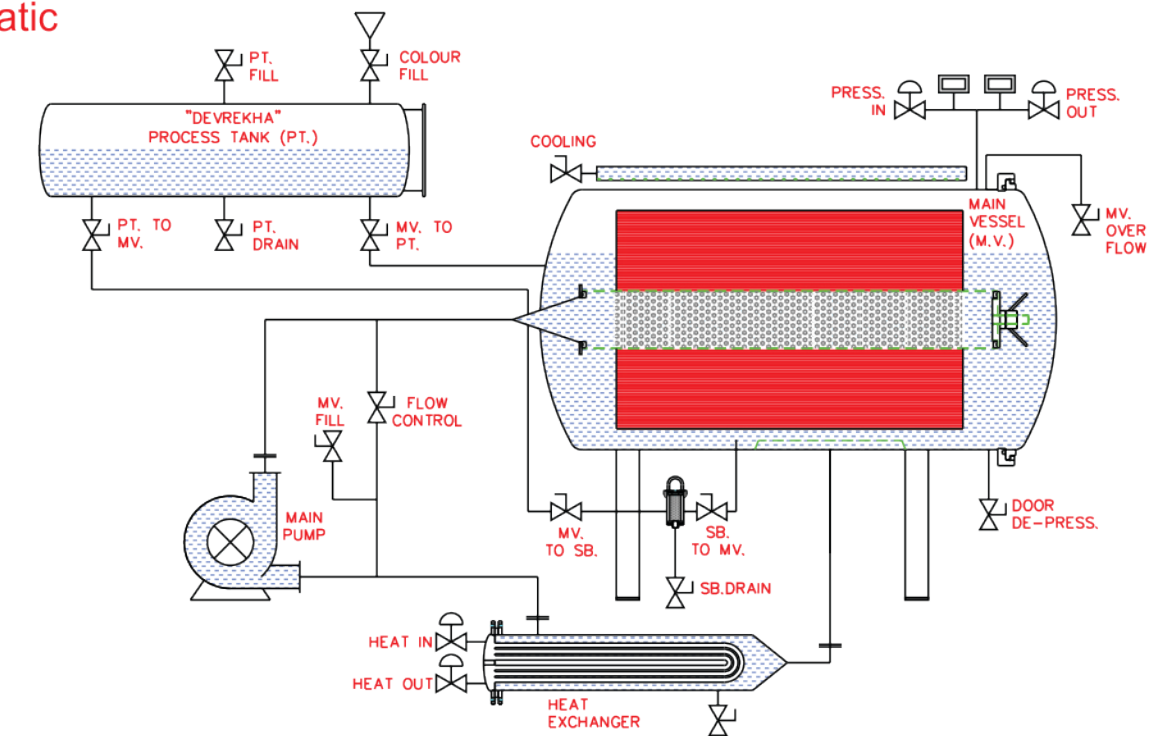
Optional Features :

- Fully automatic with PLC
- Main pump Invertor
- Flow meter (Water liter counter)

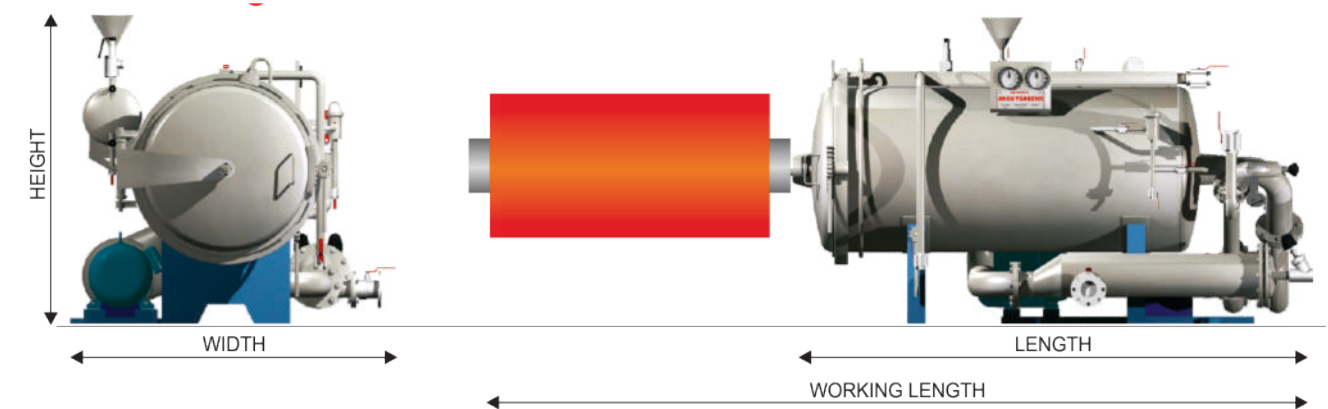
Technical Features :

- Capacity : 100 to 200 Kgs.
- Process Woven & Knitted fabrics in open width.
- Beam : Dia 300 mm x 1800 mm Long.
- High Temp. - Up to 140°C
- Vessel: SS 316 L
- Sampling device.
- Duel head design, Multi flow, high pressure centrifugal pump for dye-liquor in & out circulation.

Schematic



Dimension Diagram :



Note: Specifications & Dimension are subject to change without any prior notice.

CAPACITY (Kg.)	VESSEL DIA (INCH)	PROCESS TANK (Ltr.)	LENGTH (mm)	WORKING LENGTH (mm)	WIDTH (mm)	HEIGHT (mm)
125 to 150	36"	120	2750	4600	2000	2000
250 to 300	36"	240	4750	6600	2000	2000
200 to 250	45"	180	3000	5000	2100	2100
400 to 500	45"	360	5000	7000	2100	2100

Hydro Extractors



Our manufactured Hydro Extractor Machine is widely used for drying yarns, fabrics, clothes, silk, etc. with the help of centrifugal force. These Hydro Extractors are designed by our skilled personnel for commercial use and should be bolted to a solid concrete floor. This machine is best suitable for textile, dyestuffs and food industries, requiring filtration of various types of slurries and hydro extraction from pastes and clothes.

Hydroextractors are machines which are used in textile processing industry. These are mainly centrifuges. The wet material is placed in the extractor, which has a wall of perforated metal, generally stainless steel. the internal drum rotates at high speed thus throwing out the water contained in it. The use of hydroextractor significantly reduces the energy required to dry any material. Hydro Extractors usually work on centrifugal force creating a high Gravitational force enhancing water extraction.



Exclusive Features :

- Our Hydro Extractors can be installed even in upper floors due to its smooth vibration-free operation
- The external dimensions of the machine have been kept as small as possible to provide comfortable operating height
- The low center of gravity enables smooth running of the machine
- The machine is constructed to withstand rigorous working conditions
- The method of operation of these centrifuges permits adoption to difficult task of separation of solids from liquids

Washing Rope Form



Washing Rope Form Machine is innovatively designed to be used in both process sequence and fabric that could be treated. The main emphasis of this machine is to wash those fabrics that are not able to be treated with a conventional washing machine, thus saves water and energy. Furthermore, this machine also reduces lengthways tension occurred in fabric, avoiding shrinking. The best thing about Washing Rope Form Machine is that it is ideally suitable for woven fabrics that are made up of cotton, cotton/polyamide, cotton/polyester, cotton/viscose and cotton/viscose/polyester

The rope processing equipment that the market has had to offer so far, has rather limited the application of this technology. This applies to both the process sequences and the fabric that could be treated.

Rope processing is a technique that was used even before the arrival on the scene of modern continuous washing ranges. A few years ago the main concern was to conserve water and energy, with this new machine the main emphasis is on a wider range of application. In particular, the aim was to cater to those fabrics that could not be treated on conventional rope processing machines, owing to their tendency to crease, e.g. closely woven fabrics.

Another major consideration was the further reduction of lengthways tension in the fabric. Nowadays, in knitted fabric finishing this is a very important point, with a view to reducing residual shrinkage.

In principle of rope washing, all those fabrics that can be processed in rope form on conventional machines. e.g. circular knit fabrics made of cotton, cotton/polyamide, cotton/polyester, cotton/viscose, and cotton/viscose/polyester.

The new thing in this machine is that, it is also suitable for woven fabrics made of cotton, cotton/viscose, cotton/polyester or linen and blends which had been a problem.

Here too, the variable liquor flow system and individual temperature control provide the flexibility that is required for after print washing. In conjunction with open-width pretreatment and a downstream rope de-twister, e.g. with open-width squeeze extraction, optimum results can be achieved in the after treatment of prints in just one passage.

Long dwell times, controlled temperature and liquor flow to suit individual requirement add up to high washing efficiency.

The new, step-less fabric-loading controller, in conjunction with the individual drives for each section, ensures an optimum cloth run; requisite dwell times are maintained constant and there is no danger of the fabric storage compartments running empty or being overloaded.

The machine can be operated with or without squeezing rollers, which are turned on as required, the pressure application being determined by the roller's own weight or by compressed air-assisted loading. This enables individual adjustment of the machine to suit the needs of various goods. When processing fabrics, which crease easily, operation without squeezing rollers is possible up to certain speed limits.

The large Plexiglas door permits ready surveillance of the instruments. At the same time door provides protection from outside influence. Below this are the connections for fresh water and the individual liquor flows.

Exclusive Features :

- Proper washing of prints
- High efficiency
- Crease free washing
- Optimum temperature control
- Controlled temperature

Stenter Machine



A machine or apparatus for stretching or stentering fabrics. The purpose of the stenter machine is to bringing the length and width to pre determine dimensions and also for heat setting and it is used for applying finishing chemicals and also shade variation is adjusted. The main function of the stenter is to stretch the fabric widthwise and to recover the uniform width.

Functions :

- Heat setting is done by the stenter for lycra fabric, synthetic and blended fabric.
- Width of the fabric is controlled by the stenter.
- Finishing chemical apply on fabric by the stenter.
- Loop of the knit fabric is controlled.
- Moisture of the fabric is controlled by the stenter.
- Spirality controlled by the stenter.
- GSM of the fabric is controlled by stenter.
- Fabric is dried by the stentering process.
- Shrinkage property of the fabric is controlled.
- Curing treatment for resin, water repellent fabric is done by the stenter

Technical Features :

Roller Width	1500 mm to 3800 mm
Fabric Width	1200 mm to 3600 mm
Mangle	Two Bowl or Three Bowl
Fabric Feeding Draw Nip	1.1 kW / 1.5 kW
Mangle Motor	5.6 / 7.6 / 11 kW
Top Roller	305 mm Diameter
Driven Roller	295 mm Diameter
Bottom Roller	305 mm Diameter
Trough	Single Trough with 2 or 3 Guide Rollers or Double Trough
Guide Roll Diameter	114 mm / 141 mm / 152 mm / 177 mm (Wider Width)
Weft Correction	Fully Automatic Electronic OR Motorised Manual
Stenter	From 3 Chamber to 10 Chamber Pin-Clip Chain, Clip Chain, Pin Chain Vertical Return Pin Chain execution
Heating Media	Thermic Oil / Direct Gas / Steam
Selvedge Tension Motor	1.5 kW / 2.2 kW AC
Over-feed Motor	1.5 kW AC
Pinning Motor	0.75 kW AC
Blower Motor	5.6 kW / 7.6 kW / 11 kW
Thermic Fluid Heater	60,000 - 1,30,000 kCal - Multipass - 2 per Chamber)
Natural Gas / LPG Burner	60,000 Kcal to 1,50,000 Kcal (2 per Chamber) Approx. 65 - 150 kW
Drive	Variable Frequency AC Drive
Exhaust	With / without moisture controller